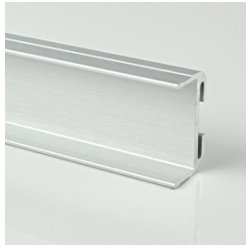
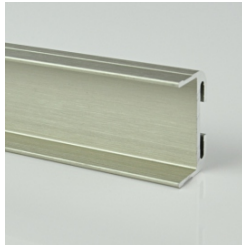


# Solu

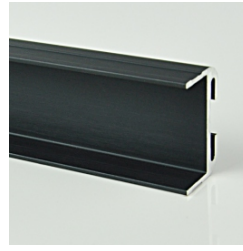
## Shadowline Handle



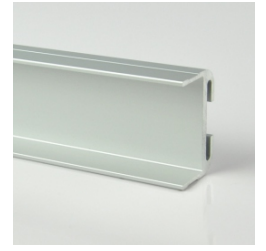
silver brushed anodized



nickel brushed anodized



black brushed anodized



clear anodized



white powder coated

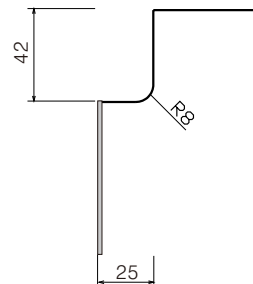


black powder coated

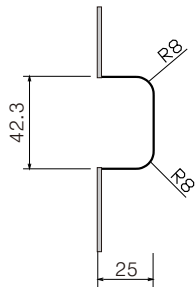


antique gold anodized  
(hand-polished)

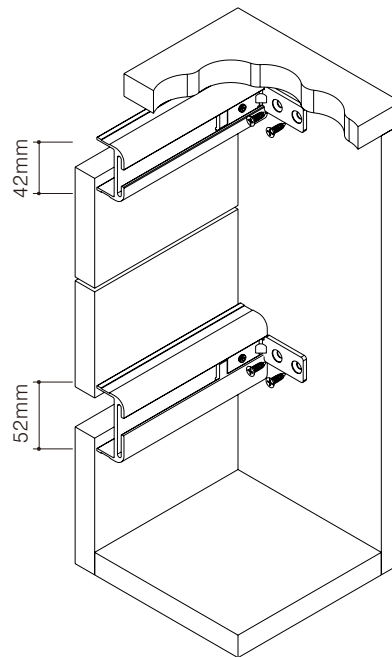
### 42mm Shadowline Notch Details:



Edge banding Inc.



Edge banding Inc.

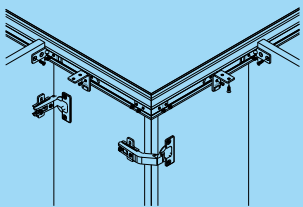


Cat.No	Length (mm)	Finish
2110.38.042	3700*	clear anodized
2110.37.042	3700*	silver brushed anodized
2110.36.042	3700*	black brushed anodized
2110.35.042	3700*	nickel brushed anodized
2110.34.042	3700*	antique gold anodized
2110.31.042	3700*	white powder coated
2110.30.042	3700*	black powder coated

Packing: 4pcs

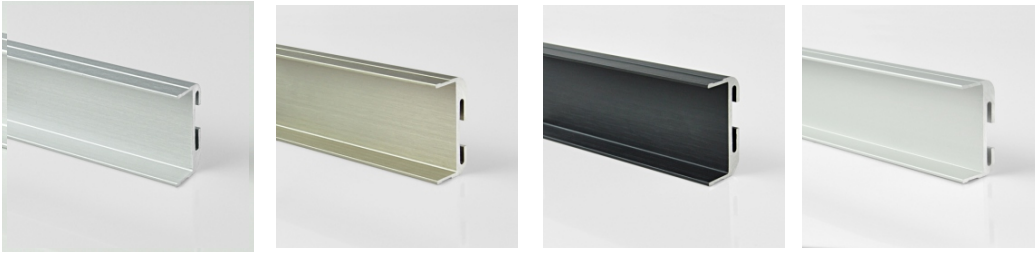
\* Usable length 3630~3670mm

HANDLE FREE SOLUTIONS



Dimensional Data not binding.  
We reserve the right to alter  
specifications without notice.

## Shadowline Handle

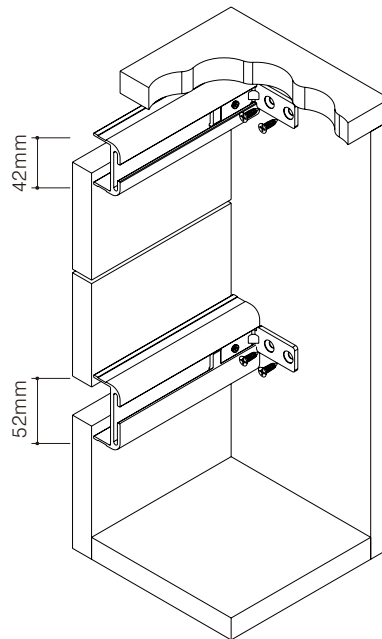
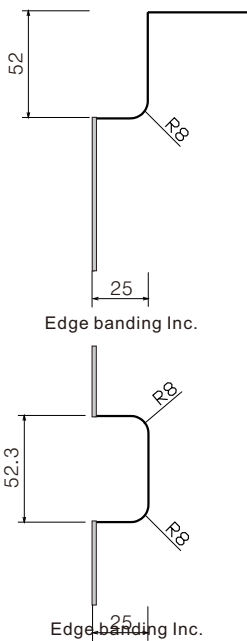


silver brushed anodized    nickel brushed anodized    black brushed anodized    clear anodized



white powder coated    black powder coated    antique gold anodized (hand-polished)

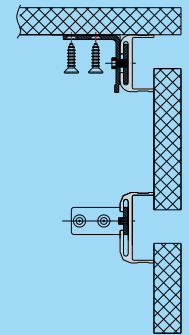
### 52mm Shadowline Notch Details:



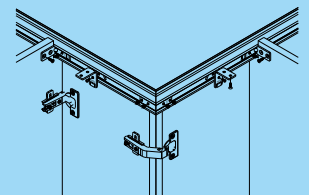
Cat.No	Length (mm)	Finish
2110.38.052	3700*	clear anodized
2110.37.052	3700*	silver brushed anodized
2110.36.052	3700*	black brushed anodized
2110.35.052	3700*	nickel brushed anodized
2110.34.052	3700*	antique gold anodized
2110.31.052	3700*	white powder coated
2110.30.052	3700*	black powder coated

Packing: 4pcs

\*Usable length 3630~3670mm



HANDLE-FREE SOLUTIONS

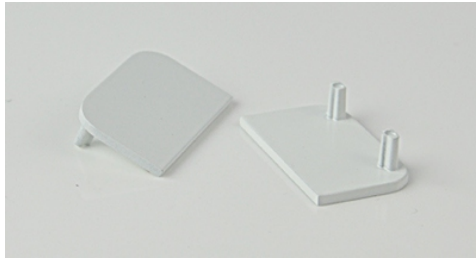


Dimensional Data not binding.  
We reserve the right to alter specifications without notice.

## Shadowline End Caps



**nickel-plated, matt**  
suitable for shadowline finish:  
nickel brushed anodized



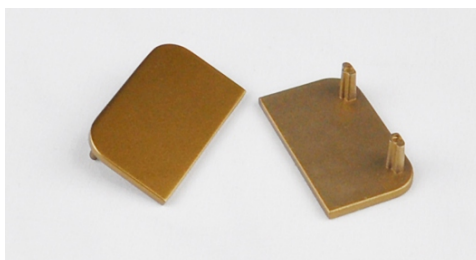
**white, powder coated**  
suitable for shadowline finish:  
white powder coated



**chrome-plated, matt**  
suitable for shadowline finish:  
clear anodized & silver brushed anodized



**black powder coated**  
suitable for shadowline finish:  
black brushed anodized & black powder coated



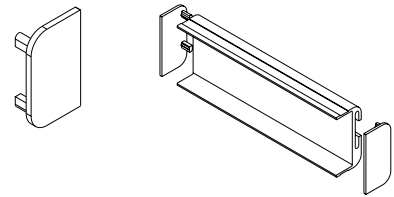
**gold, powder coated**  
suitable for shadowline finish:  
antique gold anodized

### 42mm End Cap

zinc alloy;

Cat No ■	Finish
2110.45.042	nickel-plated, matt
2110.44.042	gold, powder coated
2110.43.042	chrome-plated, matt
2110.41.042	white, powder coated
2110.40.042	black, powder coated

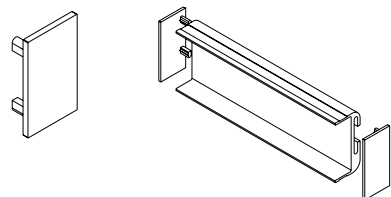
Packing: 100Pcs per carton



Suitable for 42mm shadowlines

Cat No ■	Finish
2110.43.142	satin chrome plated

Packing: 100Pcs per carton



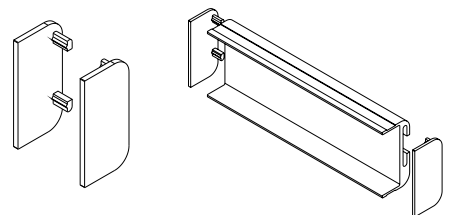
Suitable for 42mm shadowlines

### 52mm End Cap

zinc alloy;

Cat No ■	Finish
2110.45.052	nickel-plated, matt
2110.44.052	gold, powder coated
2110.43.052	chrome-plated, matt
2110.41.052	white, powder coated
2110.40.052	black, powder coated

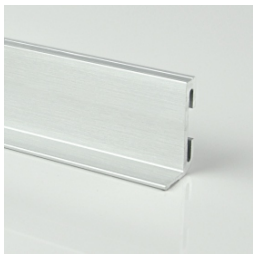
Packing: 50pairs per carton



Suitable for 52mm shadowlines

Dimensional Data not binding.  
We reserve the right to alter  
specifications without notice.

# Shadowline Handle



silver brushed anodized



nickel brushed anodized



black brushed anodized



Clear anodized



white powder coated



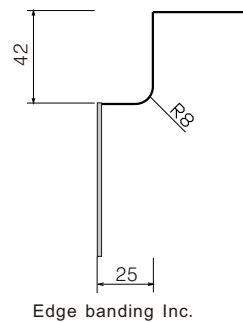
black powder coated

## 42mm Shadowline L shape Notch Details:

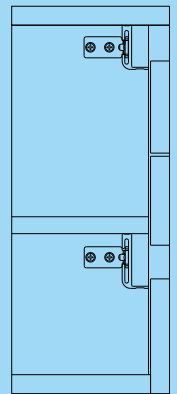
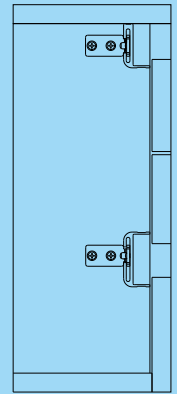
Cat No.	Length (mm)	Finish
2120. 38. 042	3700*	clear anodized
2120. 37. 042	3700*	silver brushed anodized
2120. 36. 042	3700*	black brushed anodized
2120. 35. 042	3700*	nickel brushed anodized
2120. 31. 042	3700*	white powder coated
2120. 30. 042	3700*	black powder coated

Packing: 4pcs

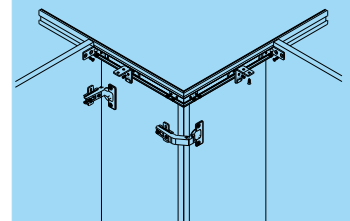
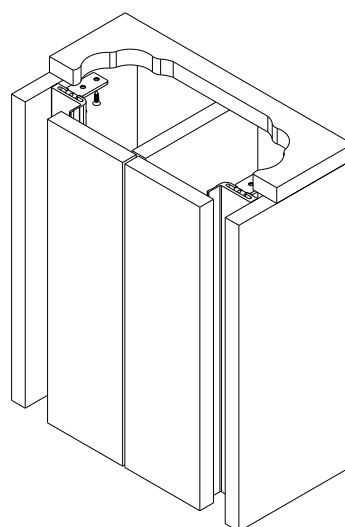
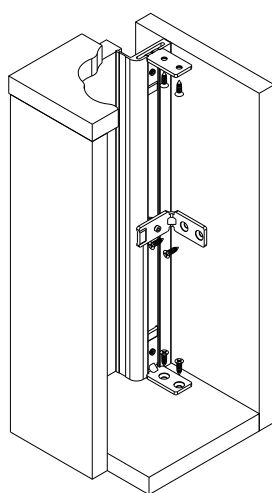
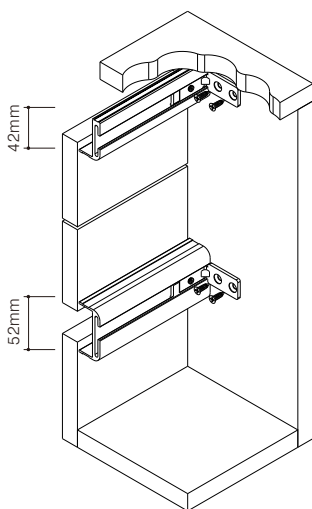
\* Usable length 3630~3670mm



Solu



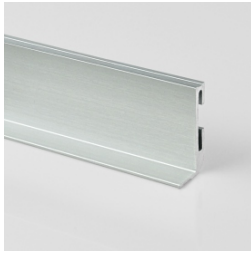
HANDLE FREE SOLUTIONS



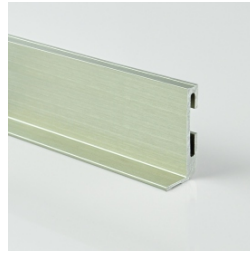
Dimensional Data not binding.  
We reserve the right to alter specifications without notice.

# Solu

## Shadowline Handle



silver brushed anodized



nickel brushed anodized



black brushed anodized



Clear anodized



white powder coated



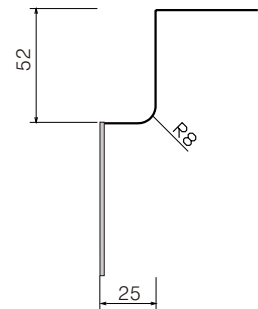
black powder coated

### 42mm Shadowline L shape Notch Details:

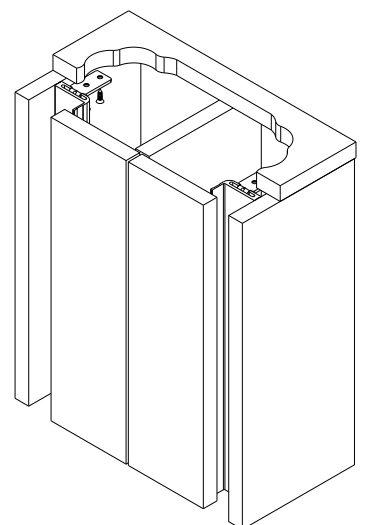
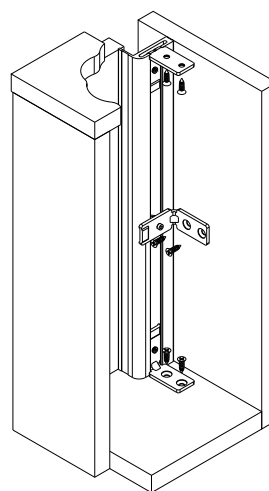
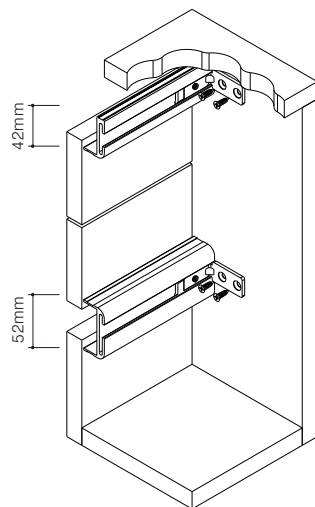
Cat No.	Length (mm)	Finish
2120.38.052	3700*	clear anodized
2120.37.052	3700*	silver brushed anodized
2120.36.052	3700*	black brushed anodized
2120.35.052	3700*	nickel brushed anodized
2120.31.052	3700*	white powder coated
2120.30.052	3700*	black powder coated

Packing: 4pcs

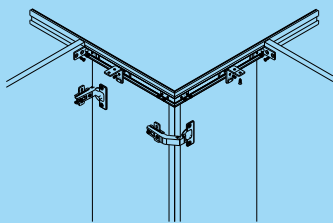
\* Usable length 3630~3670mm



Edge banding Inc.



HANDLE FREE SOLUTIONS



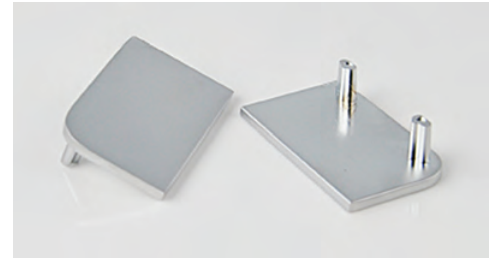
Dimensional Data not binding.  
We reserve the right to alter specifications without notice.

## Shadowline L Shape End Caps



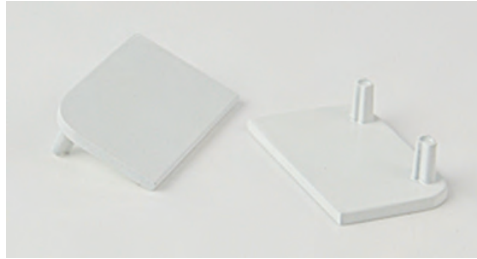
**matt nickel**

suitable for shadowline finish:  
nickel brushed anodized



**satin chrome**

suitable for shadowline finish:  
clear anodized & silver brushed anodized



**white powder coated**

suitable for shadowline finish:  
white powder coated



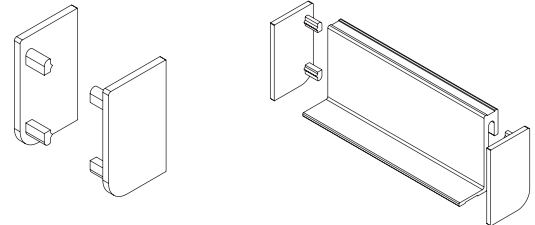
**black powder coated**

suitable for shadowline finish:  
black brushed anodized & black powder coated

### 42mm End Cap

zinc alloy ;

Cat No.	Finish
2120. 45. 042	matt nickel
2120. 43. 042	satin chrome
2120. 41. 042	white powder coated
2120. 40. 042	black powder coated

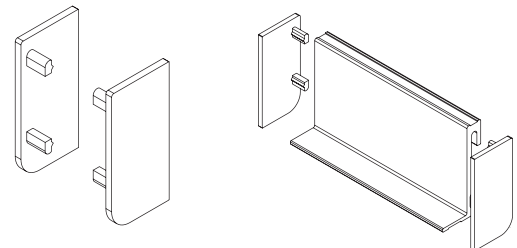


Packing: 50pairs per carton

### 52mm End Cap

zinc alloy ;

Cat No.	Finish
2120. 45. 052	matt nickel
2120. 43. 052	satin chrome
2120. 41. 052	white powder coated
2120. 40. 052	black powder coated

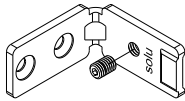


Packing: 50pairs per carton

Dimensional Data not binding.  
We reserve the right to alter  
specifications without notice.



# Shadowline Clips

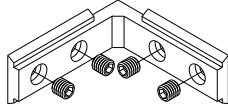


## End Clip

steel, zinc-plated

Cat No ■	2110.57.001
----------	-------------

Packing: 100Pcs per carton

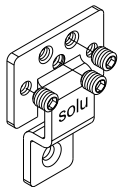


## External Corner Clip

zinc alloy, chrome-plated

Cat No ■	2110.43.004
----------	-------------

Packing: 50Pcs per carton

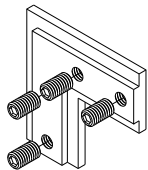


## Middle Clip

steel, zinc-plated

Cat No ■	2110.57.005
----------	-------------

Packing: 50Pcs per carton

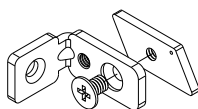


## Picture Frame Clip

zinc alloy, zinc-plated

Cat No ■	2110.43.006
----------	-------------

Packing: 50Pcs per carton

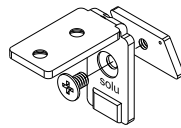


## Side Clip

steel, zinc-plated

Cat No ■	2110.57.009
----------	-------------

Packing: 100Pcs per carton

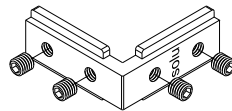


## Top Clip

steel, zinc-plated

Cat No ■	2110.57.002
----------	-------------

Packing: 100Pcs per carton

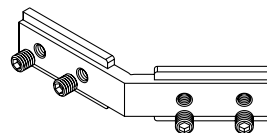


## Internal Corner Clip

zinc alloy, chrome-plated

Cat No ■	2110.43.003
----------	-------------

Packing: 50Pcs per carton

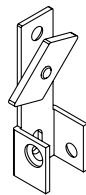


## Internal Corner Clip 135°

zinc alloy, chrome-plated

Cat No ■	2110.43.011
----------	-------------

Packing: 50Pcs per carton

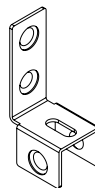


## Saddle Bracket

steel, zinc-plated

Cat No ■	2110.57.010
----------	-------------

Packing: 50Pcs per carton



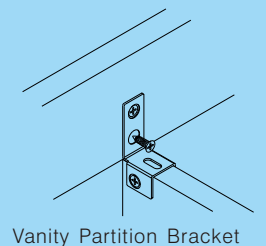
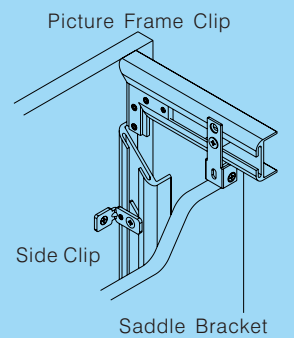
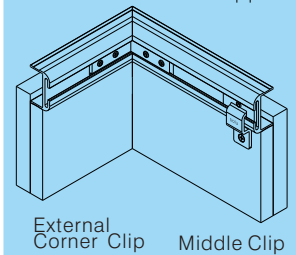
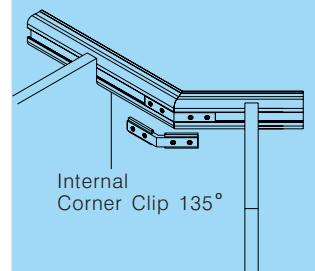
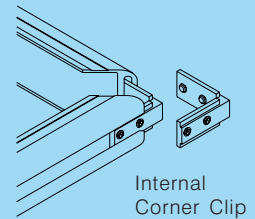
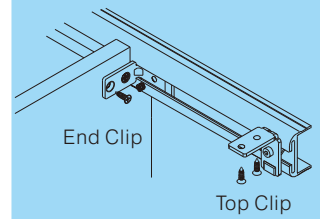
## Vanity Partition Bracket

steel, zinc-plated

Cat No ■	2110.57.007
----------	-------------

Packing: 100Pcs per carton

Solu



HANDLE-FREE SOLUTIONS

Dimensional Data not binding.  
We reserve the right to alter specifications without notice.